

Notice To All Employees:

Information about Unemployment Benefits

This employer is covered by the

MICHIGAN EMPLOYMENT SECURITY ACT

Unemployment benefits are payable to qualified and eligible workers of this employer through Michigan's Talent Investment Agency, Unemployment Insurance.

How to file an unemployment claim

If you become unemployed, you can file your new unemployment claim or reopen an established claim:

Online through the Michigan Web Account Manager (MiWAM) at michigan.gov/uia

By Phone - call the Unemployment Insurance toll free claims line: 1-866-500-0017

Payment Options: *When you file for unemployment benefits, you will choose how you want to receive your benefit payments. You can select a **debit card or direct deposit** into your checking or savings account. For more information about these payment options, visit michigan.gov/uia.*

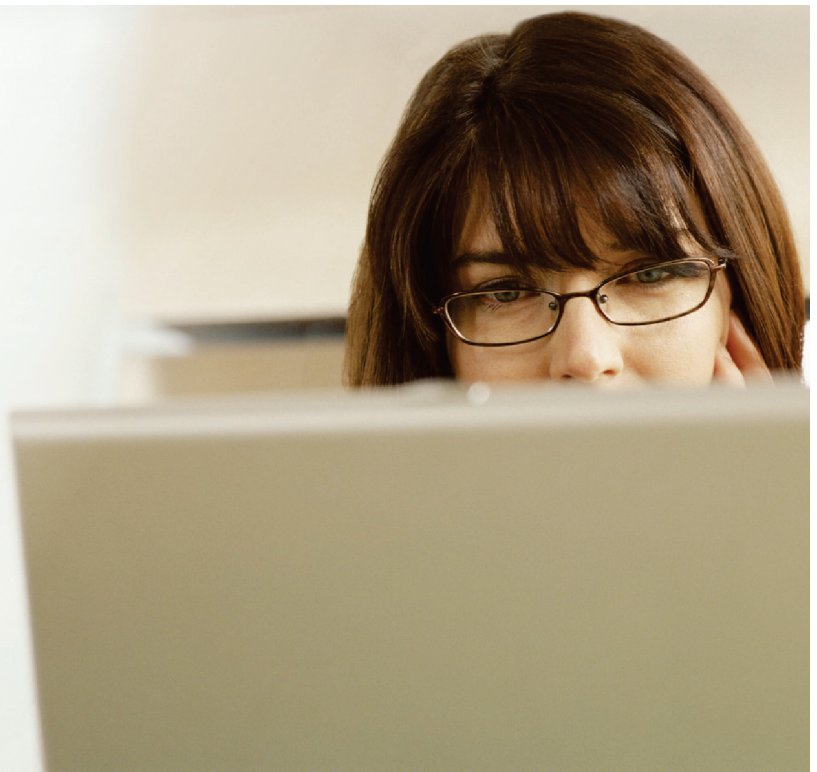


**STATE OF MICHIGAN
TALENT INVESTMENT AGENCY
UNEMPLOYMENT INSURANCE**

TIA is an equal opportunity employer/program. Auxiliary aids, services and other reasonable accommodations are available upon request to individuals with disabilities.

Michigan Department of Talent and Economic Development,
Talent Investment Agency, Unemployment Insurance; Authority: Michigan
Administrative Code, Section R 421.105; Paid for with federal funds.

UIA 1710
(Rev. 09-17)



Notice To All Employees:

Information about Unemployment Benefits

This employer is covered by the

MICHIGAN EMPLOYMENT SECURITY ACT

Unemployment benefits are payable to qualified and eligible workers of this employer through Michigan's Talent Investment Agency, Unemployment Insurance.

How to file an unemployment claim

If you become unemployed, you can file your new unemployment claim or reopen an established claim:

Online through the Michigan Web Account Manager (MiWAM) at michigan.gov/uia

By Phone - call the Unemployment Insurance toll free claims line: 1-866-500-0017

Payment Options: When you file for unemployment benefits, you will choose how you want to receive your benefit payments. You can select a **debit card or direct deposit** into your checking or savings account. For more information about these payment options, visit michigan.gov/uia.



**STATE OF MICHIGAN
TALENT INVESTMENT AGENCY
UNEMPLOYMENT INSURANCE**

TIA is an equal opportunity employer/program. Auxiliary aids, services and other reasonable accommodations are available upon request to individuals with disabilities.

Michigan Department of Talent and Economic Development,
Talent Investment Agency, Unemployment Insurance; Authority: Michigan
Administrative Code, Section R 421.105; Paid for with federal funds.

UIA 1710
(Rev. 09-17)

